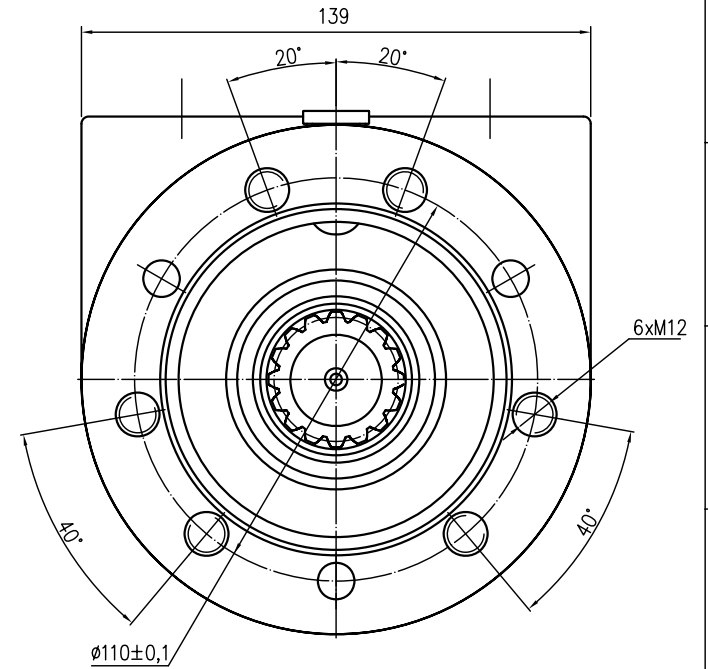
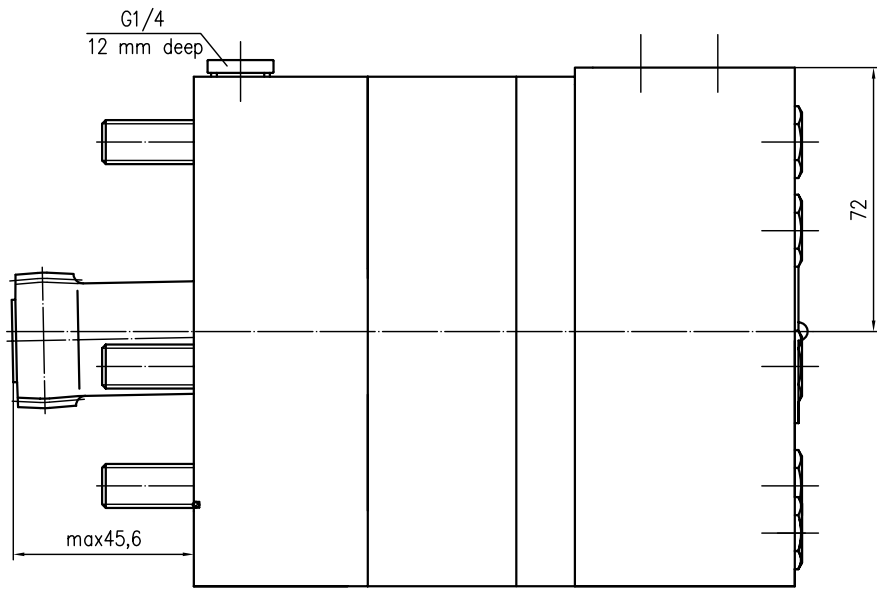
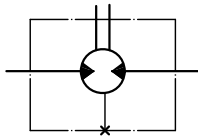
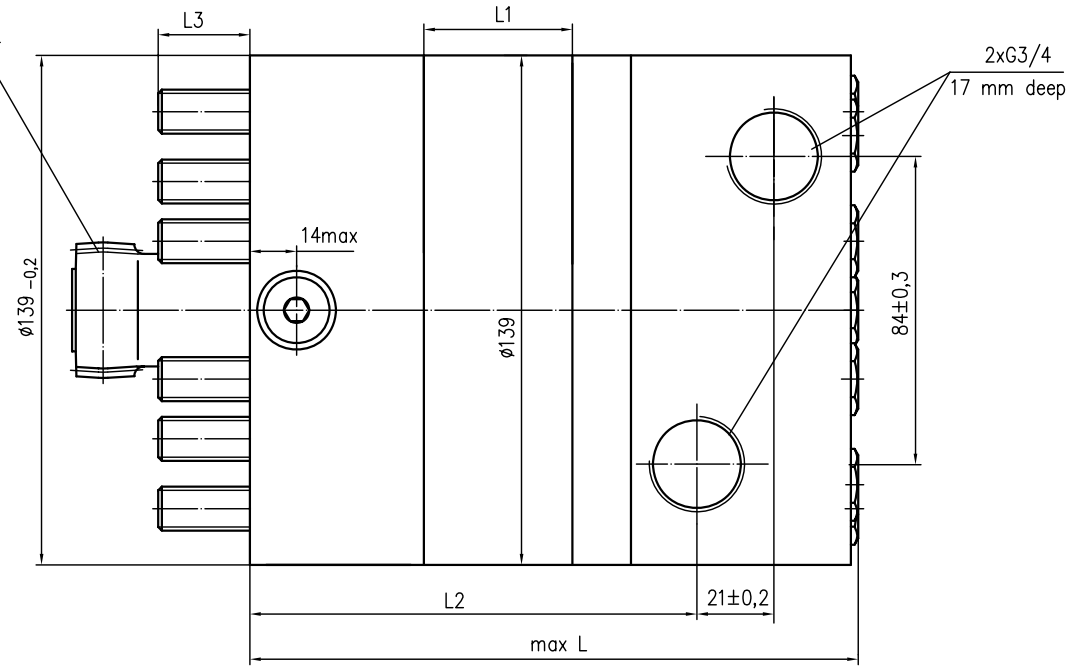


Hydraulic scheme



Involute Spline 16 DP 12/24
ANS B92.1-1976



TECHNICAL DATA

Type		MTM6V250	MTM6V315
Displacement, [cm ³ /rev.]	Cont.	251,8	326,3
Max. Speed, [RPM]	Cont.	500	380
	Int.	600	460
Max. Torque, [daNm]	Cont.	90	116
	Int.	128	163
Max. Pressure Drop, [bar]	Cont.	250	250
	Int.	350	350
Max. Oil Flow, [lpm]	Cont.	125	125
	Int.	150	150
Max. Inlet Pressure, [bar]	Cont.	270	270
	Int.	370	370
L, [mm]		157	167
L1, [mm]		31,3	40,5
L2, [mm]		112,8	122
L3, [mm]		26,5	22,3

Itemref	Quantity	Title/Name, designation, material, dimension etc	Article No./Reference
Material	Weight	Designed by Zagorova	Date 13.04.2010 Scale 1:1
		Hydraulic Motor type MTM6V250,315	
		Rev. 0	Sheet 1